



SAMUEL WOOD

Flat A, 3 Old Street, Ludlow, Shropshire, SY8 1NW

£600 Per Month



An opportunity to rent a ground floor apartment in the town centre of historic Ludlow. The property is part of five apartments in this three storey building.

This is a ground floor apartment located in a block of five other apartments under management of one owner. The main entrance is secured with door intercom entry system to ensure it is only accessed by residents and their visitors.

The landlord has taken care to make sure that not only the apartments but also the common areas are presentable and create a pleasant living space.

This particular apartment is set on the ground floor. Kitchen, with window to side, has connection for electric cooker and space for an under counter fridge-freezer. Connection for washing machine is conveniently located in a separate area of the flat. Living room with window to Old Street. Double bedroom with en-suit bathroom with walk in shower. Hallway with large airing cupboard.

The property benefits from double glazing and modern electric central heating system. There is a small lockable bin store for storage on the ground floor.

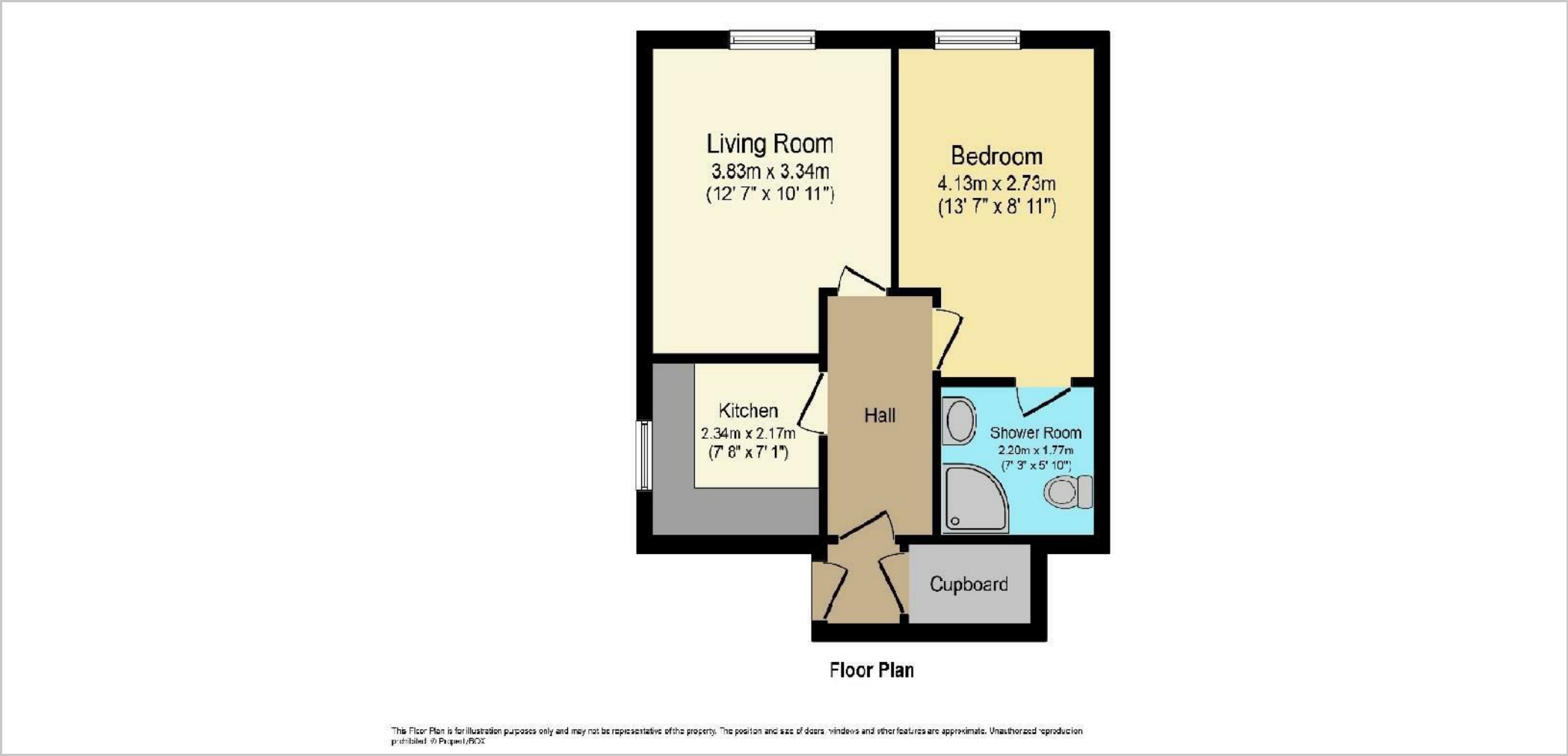
Local Authority

Shropshire Council, The Shirehall, Abbey Foregate, Shrewsbury, Shropshire SY2 6ND. Tel 0345 678 9000

Council Tax Band: A



Floor Plans



We take every care in preparing our sales details. They are checked and usually verified by the Vendor. We do not guarantee appliances, alarms, electrical fittings, plumbing, showers etc. You must satisfy yourself that they operate correctly. Room sizes are approximate; they are usually taken in metric and converted to imperial. Do not use them to buy carpets or furniture. We cannot verify the tenure, as we do not have access to the legal title; we cannot guarantee boundaries or rights of way so you must take the advice of your legal representative. No person in the employment of or representing Samuel Wood has any authority to make any representation or warranty whatever in relation to this property. If there is any point which is of particular importance to you, please contact the office and we will be pleased to check the information. Do so particularly if contemplating travelling some distance to view. Applicants are advised that the majority of our shots are taken with a wide angle lens.

CONTEMPORARY AGENCY • TRADITIONAL VALUES
2 Shoplatch, Shrewsbury, Shropshire, SY1 1HF
Tel: 01743 272710 | shrewsbury@samuelwood.co.uk